

## Printed-circuit board connector - BCH-508HS- 5 GN - 5446749

Please be informed that the data shown in this PDF Document is generated from our Online Catalog. Please find the complete data in the user's documentation. Our General Terms of Use for Downloads are valid (<http://phoenixcontact.com/download>)

Header, Nominal current: 12 A, Rated voltage (III/2): 320 V, Number of positions: 5, Pitch: 5.08 mm, Color: pastel green, Contact surface: Tin, Mounting: Wave soldering



The figure shows a 5-pos. version of the product in gray



### Key Commercial Data

|                                      |          |
|--------------------------------------|----------|
| Packing unit                         | 1 pc     |
| Minimum order quantity               | 100 pc   |
| Weight per Piece (excluding packing) | 2.2 g    |
| Custom tariff number                 | 85366990 |
| Country of origin                    | China    |

### Technical data

#### Dimensions

|                          |          |
|--------------------------|----------|
| Length                   | 12 mm    |
| Pitch                    | 5.08 mm  |
| Dimension a              | 20.32 mm |
| Length of the solder pin | 3.5 mm   |
| Pin dimensions           | 1 x 1 mm |
| Hole diameter            | 1.4 mm   |

#### General

|                             |        |
|-----------------------------|--------|
| Range of articles           | BCH-HS |
| Insulating material group   | I      |
| Rated surge voltage (III/3) | 4 kV   |
| Rated surge voltage (III/2) | 4 kV   |
| Rated surge voltage (II/2)  | 4 kV   |

# Printed-circuit board connector - BCH-508HS- 5 GN - 5446749

## Technical data

### General

|  |              |
|--|--------------|
| Rated voltage (III/3)                  | 250 V        |
| Rated voltage (III/2)                  | 320 V        |
| Rated voltage (II/2)                   | 400 V        |
| Connection in acc. with standard       | EN-VDE       |
| Nominal current I <sub>N</sub>         | 12 A         |
| Maximum load current                   | 12 A         |
| Insulating material                    | PA           |
| Flammability rating according to UL 94 | V0           |
| Color                                  | pastel green |
| Number of positions                    | 5            |

### Standards and Regulations

|  |        |
|--|--------|
| Connection in acc. with standard       | EN-VDE |
|  | CUL    |
| Flammability rating according to UL 94 | V0     |

## Classifications

### eCl@ss

|            |          |
|------------|----------|
| eCl@ss 4.0 | 272607xx |
| eCl@ss 4.1 | 27260701 |
| eCl@ss 5.0 | 27260701 |
| eCl@ss 5.1 | 27260701 |
| eCl@ss 6.0 | 27261101 |
| eCl@ss 7.0 | 27440401 |
| eCl@ss 8.0 | 27440402 |
| eCl@ss 9.0 | 27440402 |

### ETIM

|          |          |
|----------|----------|
| ETIM 3.0 | EC001121 |
| ETIM 4.0 | EC002637 |
| ETIM 5.0 | EC002637 |

### UNSPSC

|               |          |
|---------------|----------|
| UNSPSC 6.01   | 30211801 |
| UNSPSC 7.0901 | 39121432 |
| UNSPSC 11     | 39121432 |
| UNSPSC 12.01  | 39121409 |

# Printed-circuit board connector - BCH-508HS- 5 GN - 5446749

## Classifications

### UNSPSC

|             |          |
|-------------|----------|
| UNSPSC 13.2 | 39121432 |
|-------------|----------|

## Approvals

### Approvals

#### Approvals

UL Recognized / cUL Recognized / VDE Gutachten mit Fertigungsüberwachung / IEC60947-5-1 CB Scheme / cULus Recognized

#### Ex Approvals

#### Approvals submitted

## Approval details

|                                |       |       |
|--------------------------------|-------|-------|
| UL Recognized                  |       |       |
|                                | B     | D     |
| Nominal current I <sub>N</sub> | 15 A  | 15 A  |
| Nominal voltage U <sub>N</sub> | 300 V | 150 V |

|                                |       |       |
|--------------------------------|-------|-------|
| cUL Recognized                 |       |       |
|                                | B     | D     |
| Nominal current I <sub>N</sub> | 15 A  | 15 A  |
| Nominal voltage U <sub>N</sub> | 300 V | 150 V |

|   |  |
|---|--|
| VDE Gutachten mit Fertigungsüberwachung |  |
|---|--|

|                 |  |
|-----------------|--|
| IECEE CB Scheme |  |
|-----------------|--|

## Printed-circuit board connector - BCH-508HS- 5 GN - 5446749

### Approvals



### Accessories

#### Accessories

#### Coding element

Coding section - CR-BC-M - 5436157



Coding section

---

### Filler plug

Accessories - MSTB-BL - 1755477



Keying cap, for forming sections, plugs onto header pin, green insulating material

---

### Labeled terminal marker

Marker card - SK 5/3,8:FORTL.ZAHLEN - 0804183



Marker card, Card, white, labeled, Horizontal: Consecutive numbers 1 - 10, 11 - 20, etc. up to 91 - (99)100, Mounting type: Adhesive, for terminal block width: 5 mm, Lettering field: 5 x 3.8 mm

---

### Terminal marking

# Printed-circuit board connector - BCH-508HS- 5 GN - 5446749

## Accessories

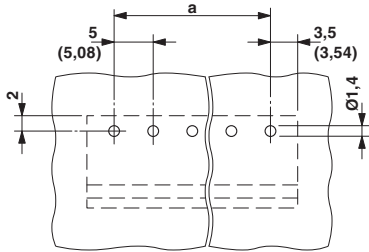
Marker card - SK U/3,8 WH:UNBEDRUCKT - 0803906

Marker card, Sheet, white, unlabeled, can be labeled with: Plotter, Office printing systems, Mounting type: Adhesive, Lettering field: 186 x 3.8 mm



## Drawings

Drilling diagram



Dimensional drawing

